



Terrace Swing Door Collection





Engineered to give you more...

Ideal for renovations and new construction, the terrace swing door collection combines superior energy performance, outstanding durability, and elegant design. Select from single doors, double doors, and doors combined with top or side windows to suit your decorating needs.

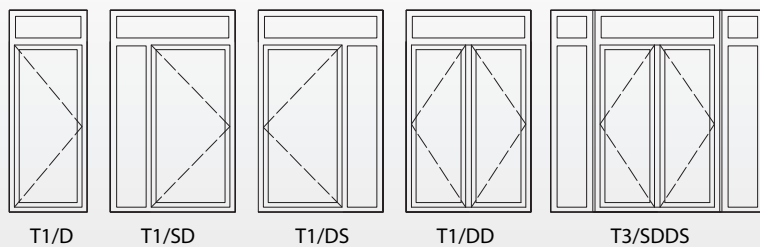
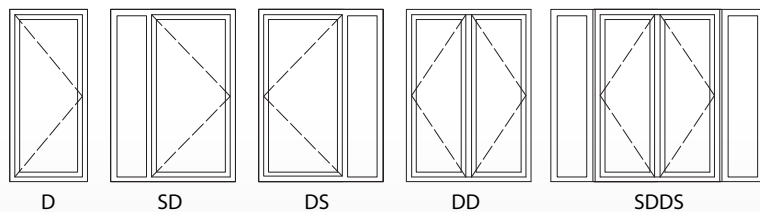
More design possibilities



Innotech terrace swing door (T3/SDDS) in titanium acryl-protect exterior and white interior.

Imagine a secure, draft-free, and beautiful feature terrace door in your home. Select from ten configurations of inswing and outswing doors, available in a range of standard widths and heights, with or without side and/or top lite windows.

Custom designed door and window configurations are available upon request.





Innotech terrace swing doors will help to reduce energy consumption, improve indoor air quality, and decrease the environmental footprint of your home – all while keeping your family comfortable and safe.



+ Draft free

The triple weatherseals and airtight construction block unwanted drafts and contribute to significant savings on both heating and cooling bills.

+ Comfortable in winter & summer

The high performance low-E glass with argon gas fill keeps homes warmer in winter and cooler in summer. Facing the ocean, the ski hill, or on the 25th floor, Innotech terrace doors keep your home comfortable all year round.

+ Quiet

The airtight construction not only seals out uncomfortable drafts, but also ensures outside noises do not penetrate your home. With Innotech doors, you can hear the difference.

+ Low maintenance finishes

Exterior surface finishes are easy to clean, extremely durable, and never need painting.

+ Superior energy efficiency

Innotech terrace swing doors are ENERGY STAR® qualified for Canadian Zones A, B and C and exceed the ENERGY STAR® requirements for all US zones.

+ Secure multipoint locking hardware

Multipoint locking hardware provides additional safety for your home by making it nearly impossible to pry the door away from its locks or remove it from its hinges. Reinforced internally with galvanized steel, each door is also surrounded by a band of steel hardware that securely bolts to the frame at multiple points.

+ Designed to last

From the steel reinforced warp-resistant framing to the corrosion resistant and adjustable hardware, Innotech terrace swing doors offer outstanding durability for decades of optimal performance. Ask us about our industry leading warranty.

+ A sustainable choice

Most door frames are made with clean recycled content and all vinyl door frames can be recycled at the end of their long service life. Innotech is also committed to recycling all vinyl scraps during the manufacturing process.



More value

1. **Advanced glass** maximizes daylight while shading you from the sun's heat and insulating you from winter's cold. Includes argon gas fill, "soft" low-E coating, and durable warm edge spacer construction.

Double Pane Glass

U-Factor: 0.28 | SHGC: 0.26 | U-Value: 1.59

Triple Pane Glass

U-Factor: 0.19 | SHGC: 0.22 | U-value: 1.08

Additional glass options are available with custom orders.

2. **Multiple color finish** options to complement the elegant profile design. Custom wood grain and other colour options available with custom orders.
3. **Watertight welded frame** construction prevents leaks and deterioration even in the wettest environments.
4. **Steel reinforced** for added strength and warp resistance.
5. **Triple weatherseals** block drafts, prevent leaks, and greatly reduce outdoor and traffic noise.

+ Designer frame colors

The Innotech standard terrace door collection is available in five contemporary frame color combinations:

- Natural white exterior and interior
- Café latté exterior and interior
- Charcoal acryl-protect exterior with white interior
- Charcoal acryl-protect exterior with charcoal painted interior
- Titanium acryl-protect exterior with white interior



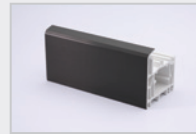
WHITE



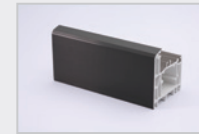
CAFÉ LATTÉ



TITANIUM



CHARCOAL
EXTERIOR



CHARCOAL
EXTERIOR & INTERIOR

Colors shown are approximate. Please ask an Innotech representative for vinyl color samples for accurate color selection. Additional profile colors and color combinations are available with custom door orders.

+ Comfort-grip lever handles

All doors are paired with standard satin silver handles. Handles are also available in satin titanium, charcoal black, chocolate brown and white.



+ Heavy duty hinges

Need no maintenance or lubrication.



+ Optional key lock

All doors are available with an optional key lock for convenient outside access to a locked door.

PROUDLY DISTRIBUTED BY:



innotech
windows + doors
innotech-windows.com

Learn more at www.innotech-windows.com/terracecollection